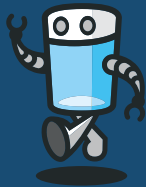


# PHIL

THE AQUAMATIC BARTENDER

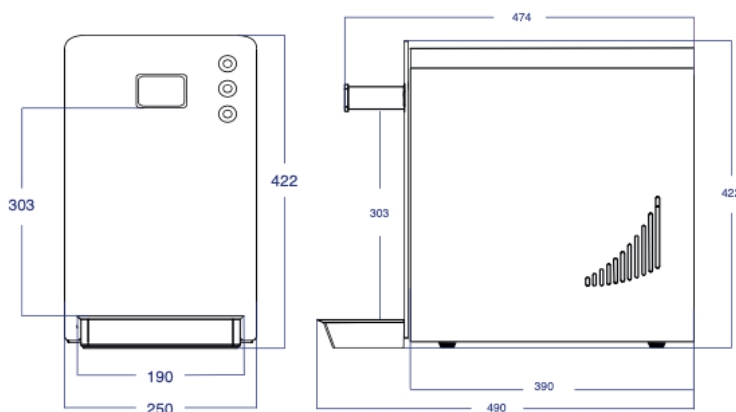


20  
l/h

R1234  
XY



## Office



Cooling capacity *	20 l/h
Delta temperature *	10° C
Max continuous supply	7 l
Pump	65w
Cooling technology	Hermetic saturator 5.5l
Condensation	Slow ventilation
Refrigerant gas	R1234 xy / R134a
Inlet Pressure	3 bars
Adjustable thermostat	Yes
Supply	220w 50-60 Hz
Compressor power	1/12 CC2
Absorbed power	145W

Working room temperature	Min 5°C - Max 35°C
Inlet water pipe	8 mm
Inlet CO <sup>2</sup> pipe	6 mm
Dispensing area height	303 mm
Typology	Countertop / Undercounter
Drip tray	Stainless steel
Net weight	16 kg
Dimensions WxDxH	250 x 490 x 422 mm
May vary depending on models	
Dispensing options	Cold still water, cold sparkling water and room temperature water
Materials	Hot painted metal sheet

\*inlet water temp of 20°C; Delta is the difference temperature between inlet and outlet water

### VERSIONS

Countertop

Undercounter

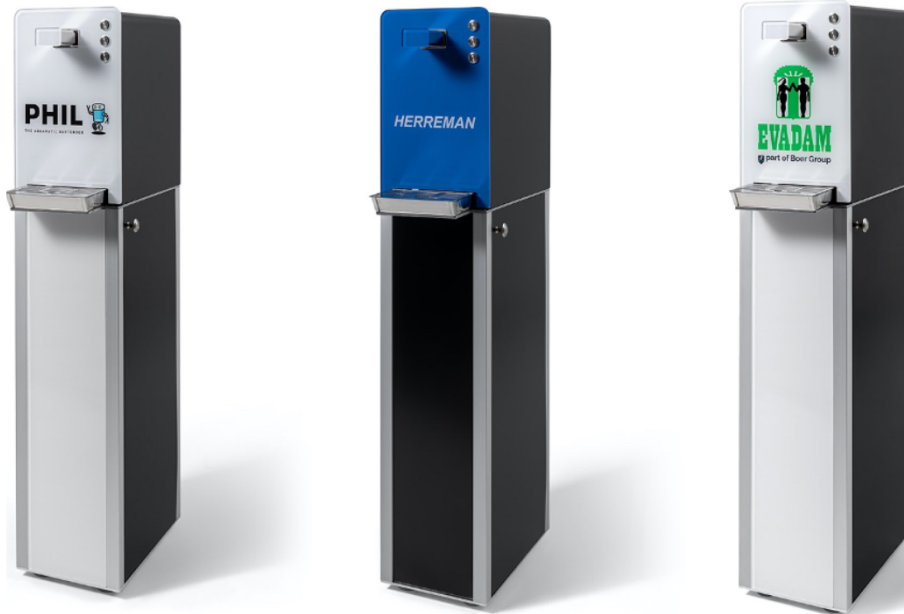
### CERTIFICATION



D.M. 174



# Office



<b>Dimensions (W x D x H) or (Dia x H)</b>	
Dispenser & cabinet	250 x 490 x 1250 mm
CO2 Cartridge (2kg)	115 x 440 mm
Filter (0,2 micron)	80 x 260 mm
Filter housing	90 x 85 mm
<b>COLOURS</b>	
Dispenser & cabinet	Black
Frontpanel dispenser	Personilased (printed in all colours, logo's, own designs)
Frontpanel cabinet	Personilased (printed in all colours, logo's, own designs)
<b>REQUIREMENTS</b>	
Electric	230V / 16A
Water	3/4" male water outlet
CO2 & filter	Fits in cabinet

